

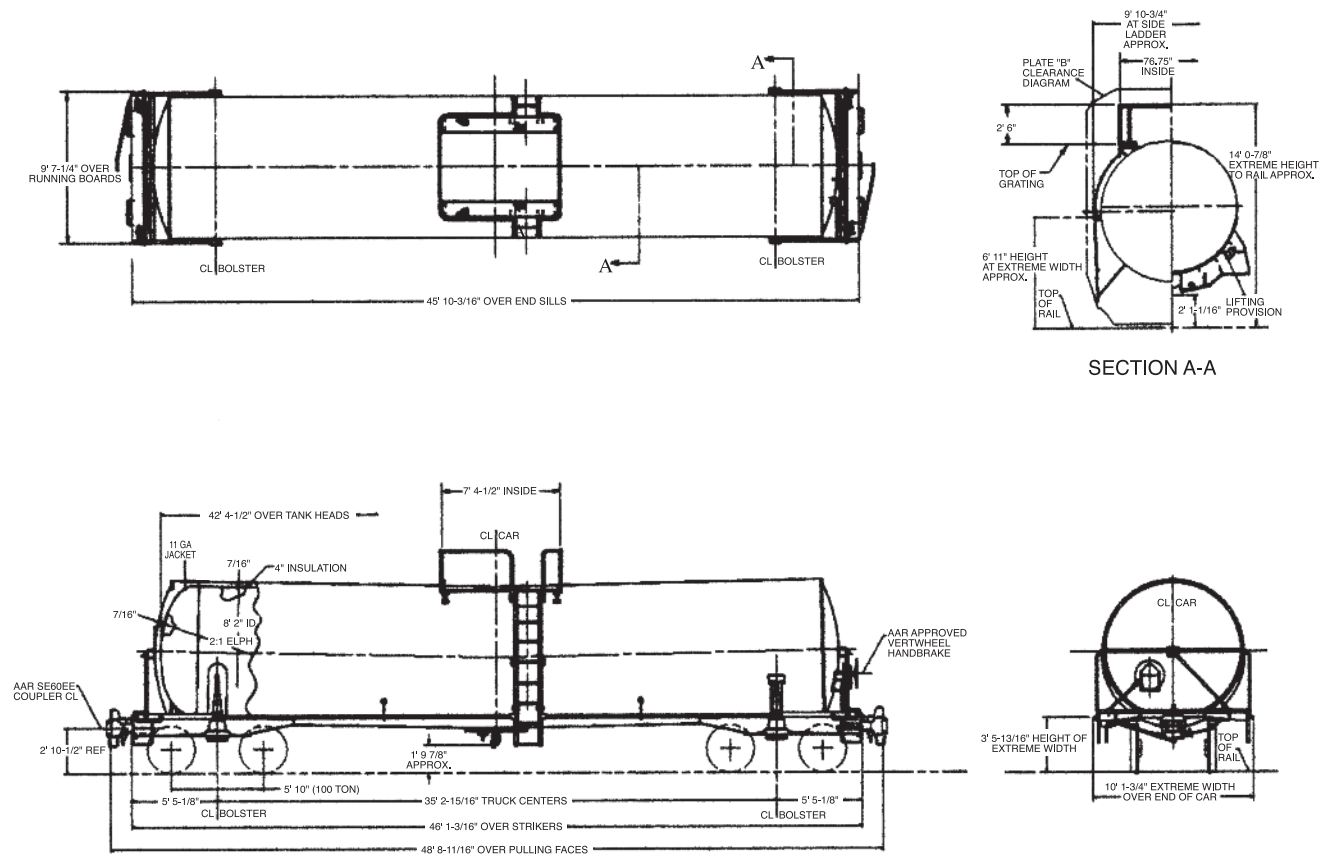
CLAY SLURRY

15,800 Gallon Capacity
286,000 lbs. Gross Rail
Load
AAR 211A100W1



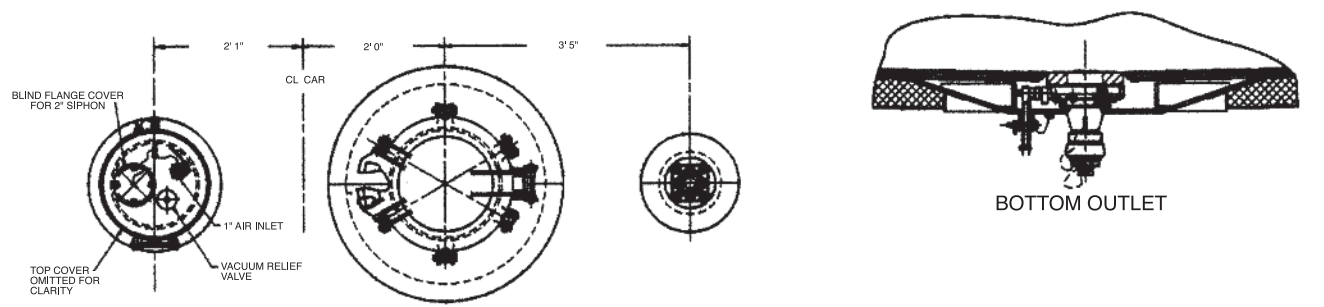
SMBC RAIL SERVICES

GENERAL ARRANGEMENT



Tank car specifically designed for the transportation of clay slurry.

MANWAY & FITTINGS

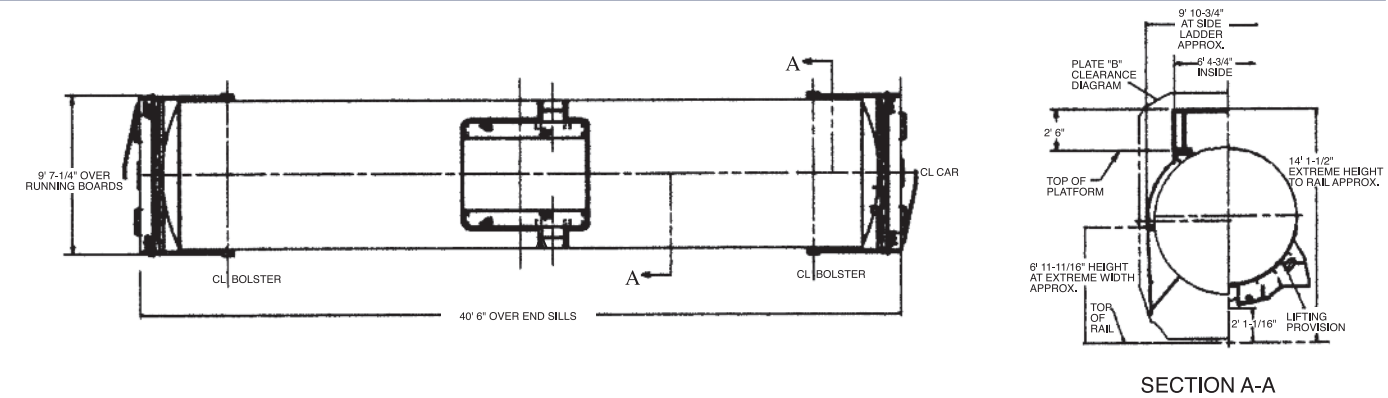


SPECIFICATIONS

13,800 Gallon Capacity
263,000 lbs. Gross Rail
Load
DOT 111A100W1

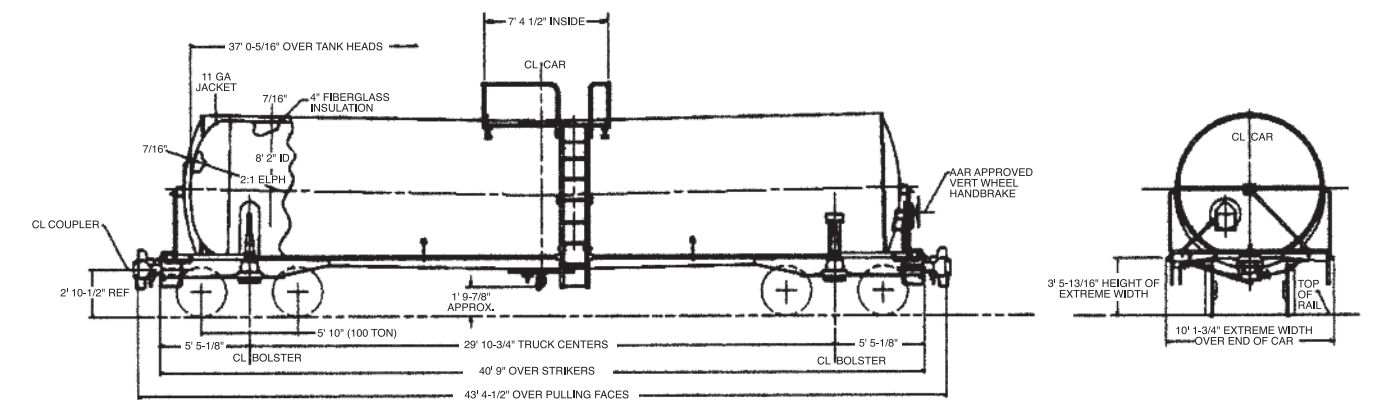
GENERAL DATA	13,800	15,800
Specification Stencilled	DOT 111A100W1	AAR 211A100W1
Shell Full Capacity	13,800 Gallons	15,800 Gallons
Gross Rail Load	263,000 lbs.	286,000 lbs.
Estimated Lightweight	58,200 lbs.	62,500 lbs.
Length Over Strikers	40' 9"	46' 1-3/16"
Truck Centers	29' 10-3/4"	35' 2-15/16"
Height, Extreme	14' 1-5/16"	14' 1-5/16"
Width, Extreme	9' 0-3/4"	10' 7"

GENERAL ARRANGEMENT



TANK

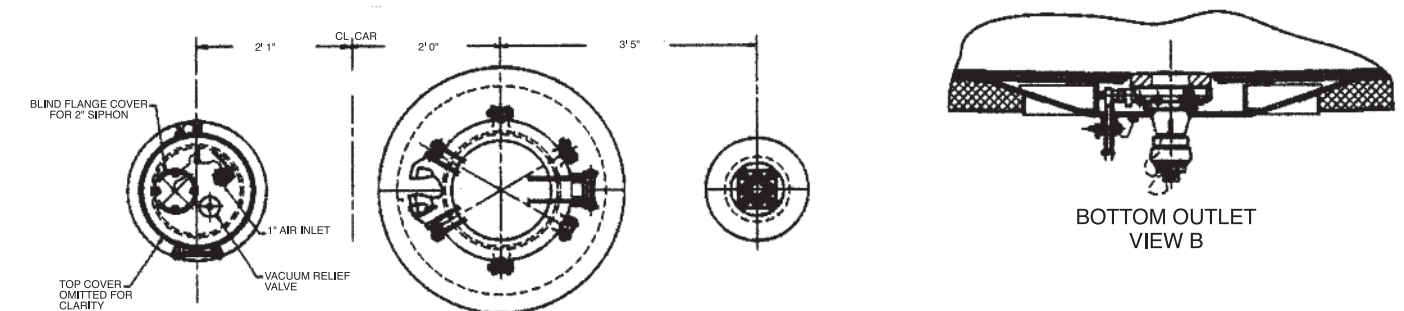
Class	DOT 111A100W1	DOT 111A100W1
Inside Diameter	98"	98"
Slope	1/4" per foot	1/4" per foot
Length Over Tank Heads	37' 5/16"	42' 4-1/2"
Plate Thickness	7/16"	7/16"
Insulation	4" 1 lb. Nominal Density Fiberglass	4" 1 lb. Nominal Density Fiberglass



TANK FITTINGS

Manway Cover Design	Cast Steel, GR. B, 6-bolt Design	Cast Steel, GR. B, 6-bolt Design
Manway Nozzle	20"	20"
Siphon Pipe	Provisions Provided for 2"	Provisions Provided for 2"
Siphon Valve	N/A	N/A
Air Inlet	1" S.S. Screwed Ball Valve	1" S.S. Screwed Ball Valve
Safety Valve	75 psi C.S.	75 psi C.S.
Vacuum Relief Valve	S.S.	S.S.
Gauging Device	S.S. Visual Marker	S.S. Visual Marker
Bottom Outlet Valve	6" Wafer-Sphere Valve; S.S. Trim	6" Wafer-Sphere Valve; S.S. Trim
Sump	N/A	N/A

MANWAY & FITTINGS



TRUCKS

Type	100 Ton Capacity	100 Ton Capacity
Wheels	Steel, 36" One-Wear	Steel, 36" One-Wear