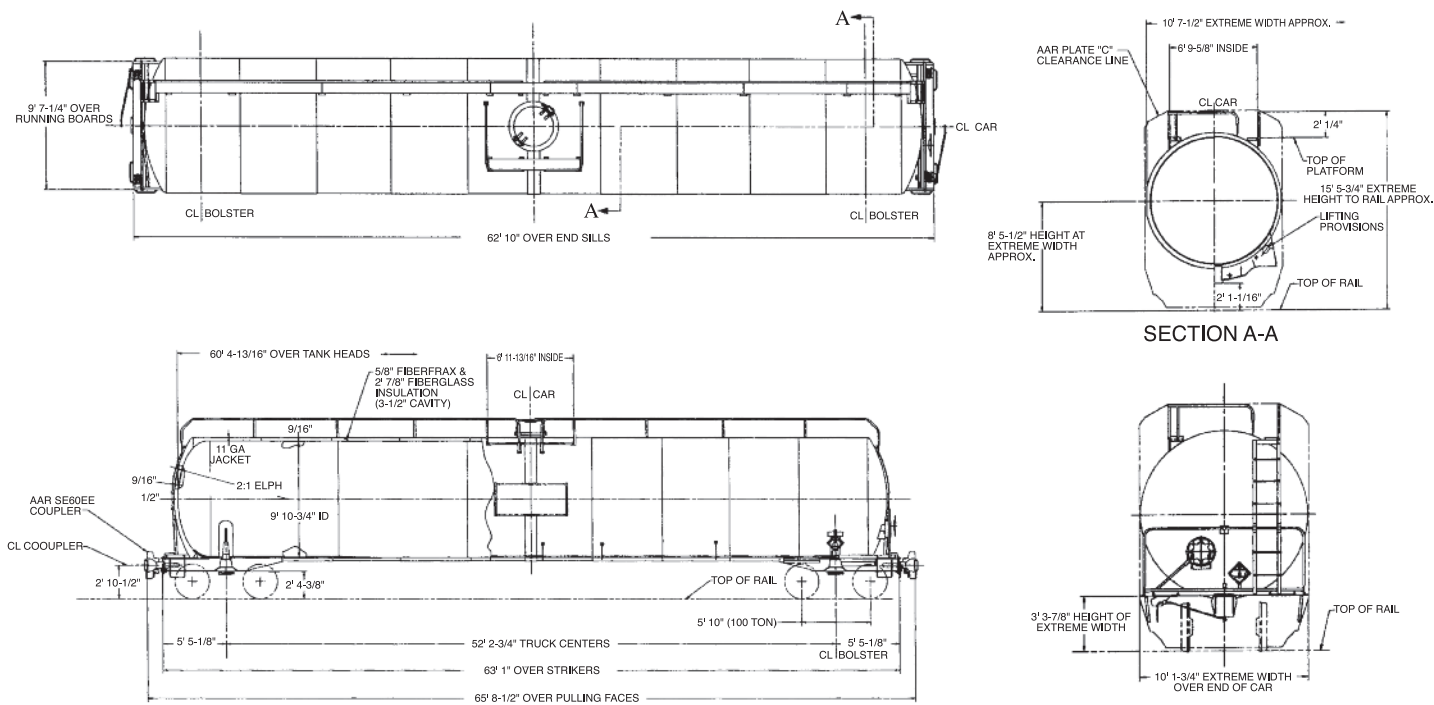


**33,600 Gallon Capacity**  
**263,000 lbs. Gross Rail Load**  
**DOT 105J300W**

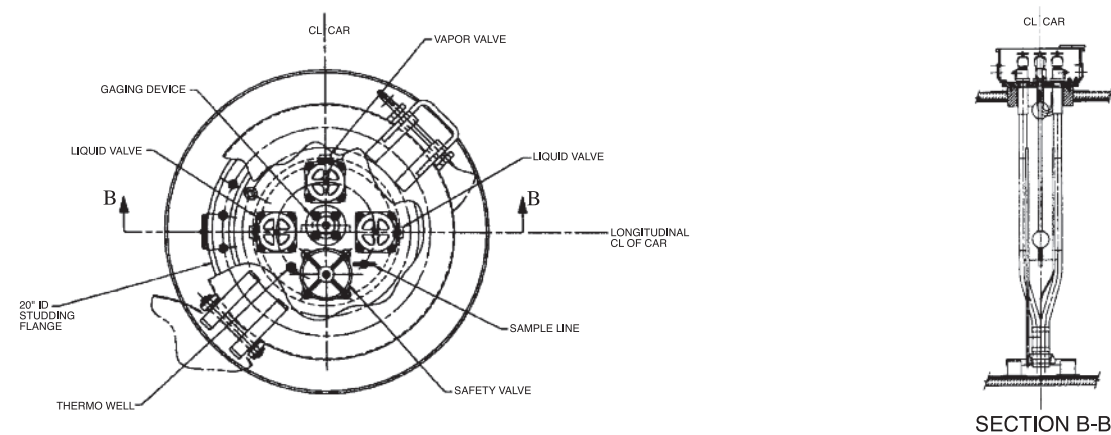
VCM/LPG

## GENERAL ARRANGEMENT



Tank car specifically designed for the transportation of VCM/LPG gasses.

## MANWAY & FITTINGS



# SPECIFICATIONS

**24,850 Gallon Capacity**  
**263,000 lbs. Gross Rail Load**  
**DOT 105J300W**

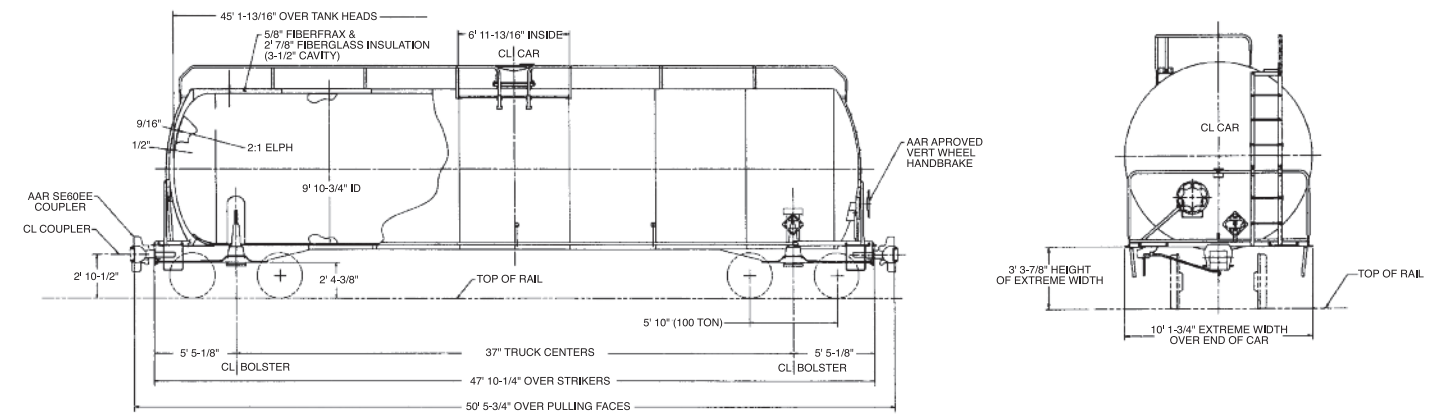
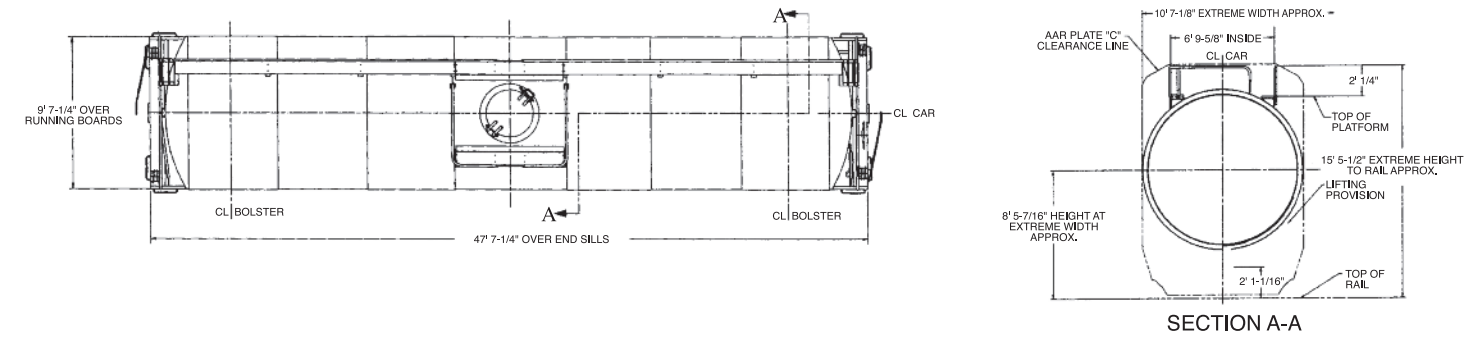
GENERAL DATA	24,850	33,600
Specification Stencilled	DOT 105J300W	DOT 105J300W
Shell Full Capacity	24,850 Gallons	33,600 Gallons
Gross Rail Load	263,000 lbs.	263,000 lbs.
Estimated Lightweight	82,100 lbs.	96,500 lbs.
Length Over Strikers	47' 10-1/4"	63' 1"
Truck Centers	37'	52' 2-3/4"
Height, Extreme	15' 5-1/2"	15' 5-3/4"
Width, Extreme	10' 7-1/8"	10' 7-1/2"

TANK	DOT 105J300W	DOT 105J300W
Class	DOT 105J300W	DOT 105J300W
Inside Diameter	118 3/4"	118 3/4"
Length Over Tank Heads	45' 1-13/16"	60' 4-13/16"
Plate Thickness	9/16"	9/16"

TANK FITTINGS	ASTM A516 GR. 70	ASTM A516 GR. 70
Manway Cover	ASTM A516 GR. 70	ASTM A516 GR. 70
Manway Nozzle	20"	20"
Eduction Pipe (2)	3" SCH. 80 C.S.	3" SCH. 80 C.S.
Liquid Valve (2)	2" S.S. Trim	2" S.S. Trim
Vapor Valve	2" S.S. Trim	2" S.S. Trim
Safety Valve	225 psi	225 psi
Vacuum Relief Valve	N/A	N/A
Gauging Device	Magnetic	Magnetic
Bottom Outlet Valve	N/A	N/A
Sump	N/A	N/A

TRUCKS	100 Ton Capacity	100 Ton Capacity
Type	100 Ton Capacity	100 Ton Capacity
Wheels	Steel, 36" One-Wear	Steel, 36" One-Wear

## GENERAL ARRANGEMENT



## MANWAY & FITTINGS

