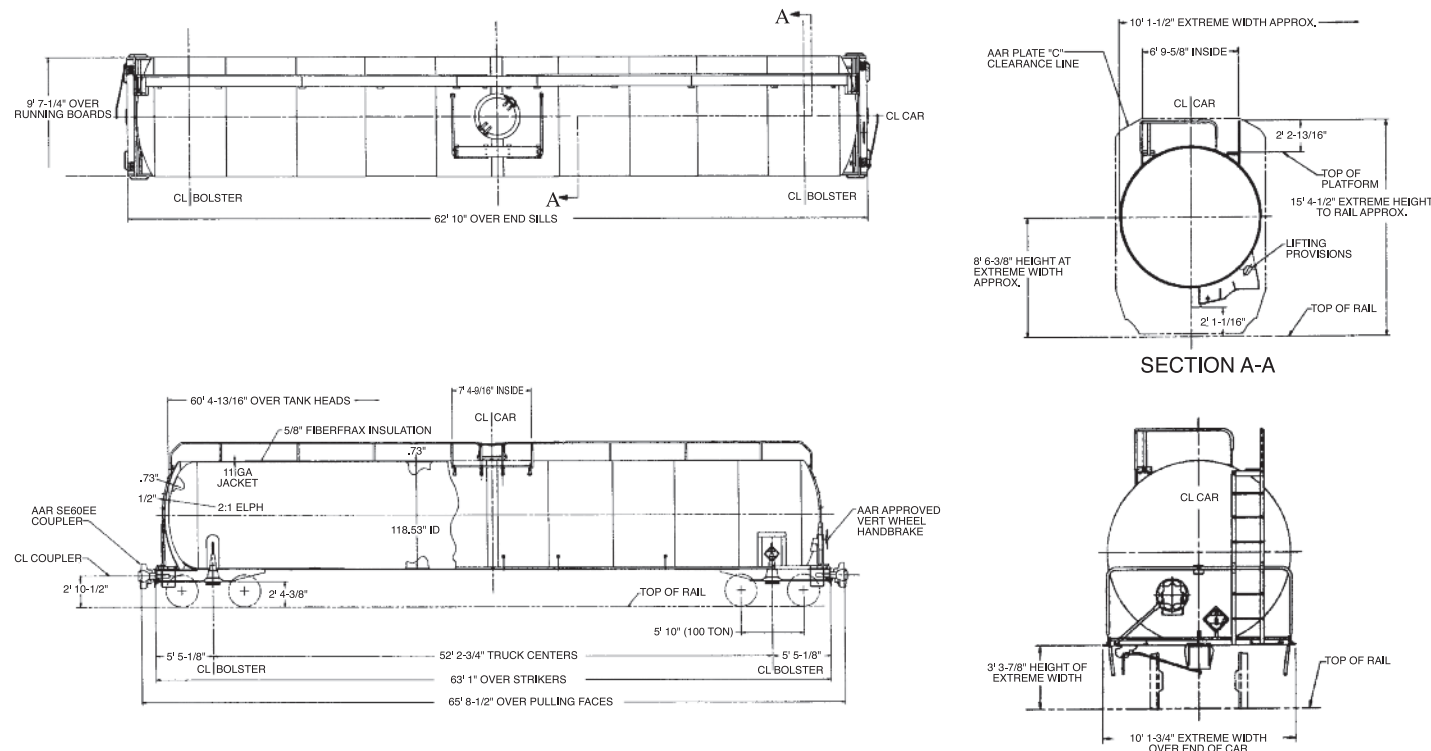




**33,500 Gallon Capacity**  
**263,000 lbs. Gross Rail Load**  
**DOT 112J400W**

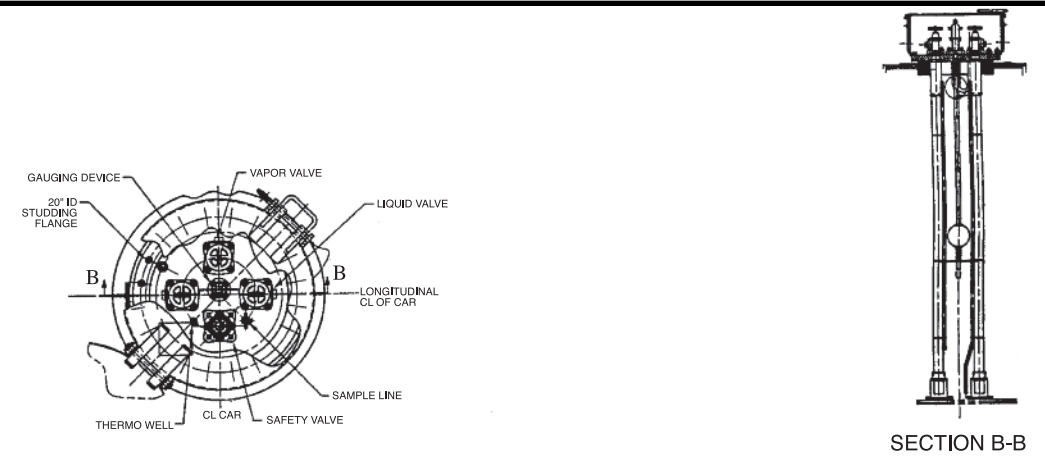
PROPYLENE

## GENERAL ARRANGEMENT



Tank car specifically designed for the transportation of propylene.

## MANWAY & FITTINGS



# SPECIFICATIONS

**33,500 Gallon Capacity**  
**263,000 lbs. Gross Rail Load**  
**DOT 105J400W**

## GENERAL DATA

**33,500**

**33,500**

Specification Stencilled	DOT 105J400W	DOT 112J400W
Shell Full Capacity	33,500 Gallons	33,500 Gallons
Gross Rail Load	263,000 lbs.	263,000 lbs.
Estimated Lightweight	109,700 lbs.	108,300 lbs.
Length Over Strikers	63' 1"	63' 1"
Truck Centers	52' 2-3/4"	52' 2-3/4"
Height, Extreme	15' 5-3/4"	15' 4-1/2"
Width, Extreme	10' 7-1/2"	10' 1-1/2"

## TANK

Class	DOT 105J400W	DOT 112J400W
Inside Diameter	118.53"	118.53"
Length Over Tank Heads	60' 4-13/16"	60' 4-13/16"
Plate Thickness	.73"	.73"

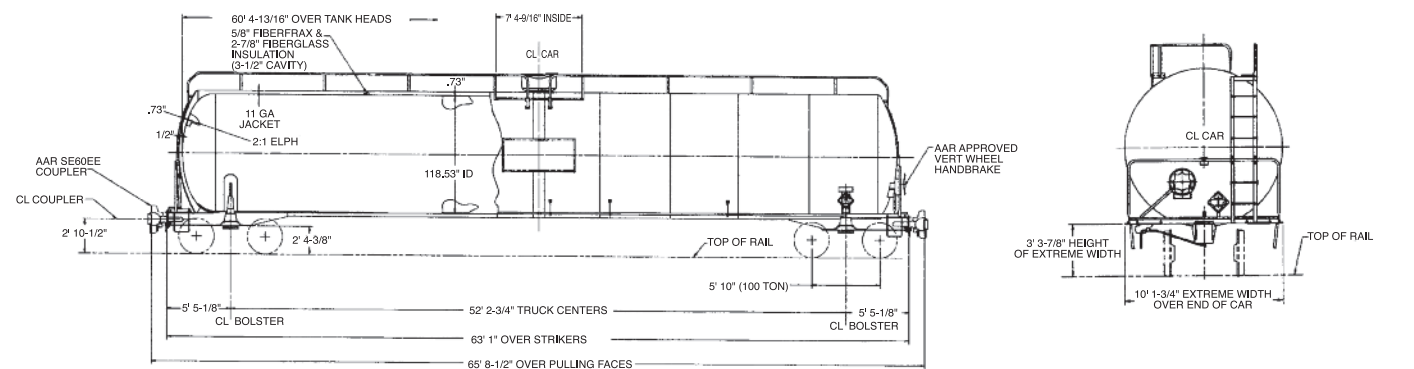
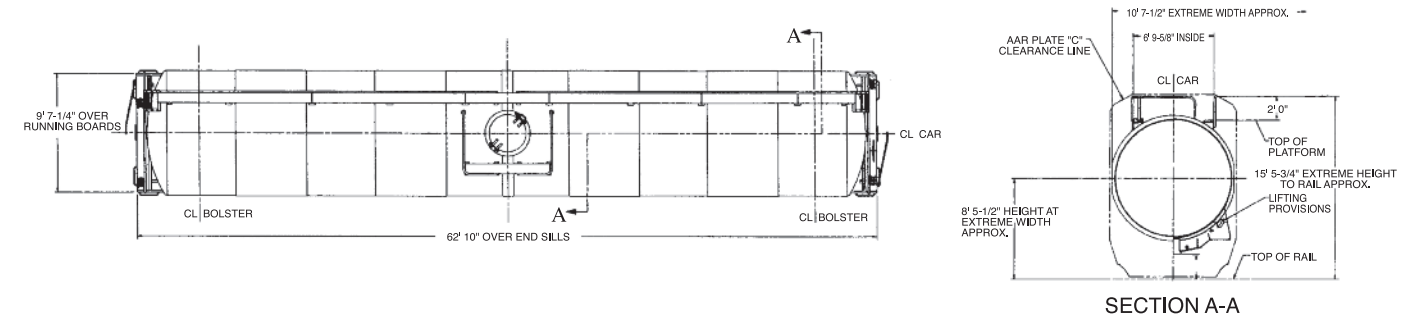
## TANK FITTINGS

Manway Cover	ASTM A516 Gr. 70	ASTM A516 Gr. 70
Manway Nozzle	20"	20"
Education Pipe (2)	3" SCH. 80 C.S.	3" SCH. 80 C.S.
Liquid Valve (2)	2" S.S. Trim	2" S.S. Trim
Vapor Valve	2" S.S. Trim	2" S.S. Trim
Safety Valve	300 psi	300 psi
Vacuum Relief Valve	N/A	N/A
Gauging Device	Magnetic	Magnetic
Bottom Outlet Valve	N/A	N/A
Sump	N/A	N/A

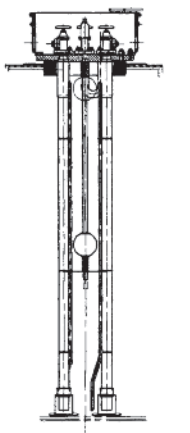
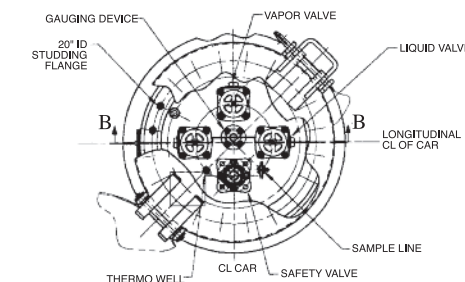
## TRUCKS

Type	100 Ton Capacity	100 Ton Capacity
Wheels	Steel, 36" One-Wear	Steel, 36" One-Wear

## GENERAL ARRANGEMENT



## MANWAY & FITTINGS ARRANGEMENT



SECTION B-B