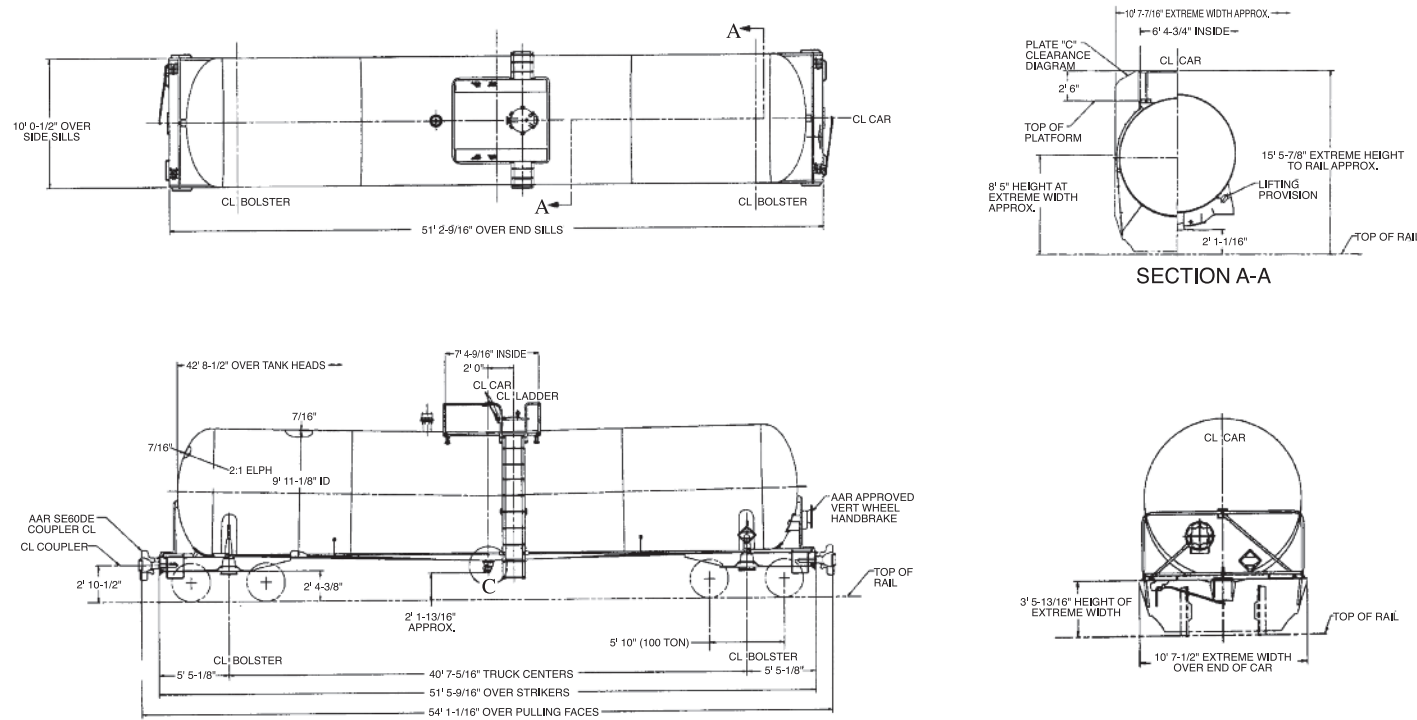


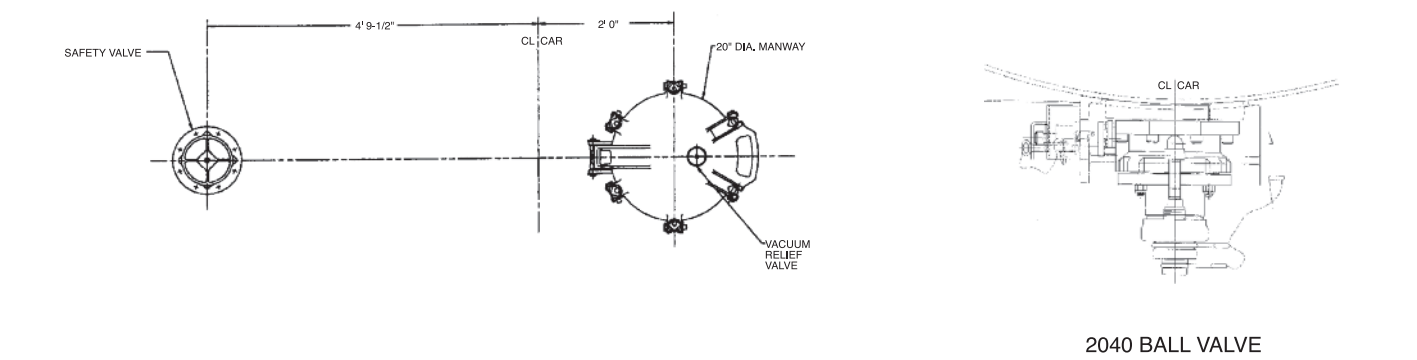
GENERAL SERVICE

**26,800 Gallon Capacity
263,000 lbs. Gross Rail Load
DOT 111A100W1**

GENERAL ARRANGEMENT



MANWAY & FITTINGS



2040 BALL VALVE



Non-insulated tank cars are specifically adaptable for the transportation of products such as:

- Food products**
Vegetable oils, sugars, molasses and corn syrup
- Petroleum products**
Gasoline, lubricating oils, fuel oil and flammable liquids
- Chemical products**
Alcohol, plasticizers and solvents

SPECIFICATIONS

GENERAL DATA **21,000** **23,500** **26,800**

Specification Stencilled*	DOT 111A100W1	DOT 111A100W1	DOT 111A100W1
Shell Full Capacity	21,000 Gallons	23,500 Gallons	26,800 Gallons
Gross Rail Load*	263,000 lbs.	263,000 lbs.	263,000 lbs.
Estimated Lightweight	57,600 lbs.	60,100 lbs.	63,400 lbs.
Length Over Strikers	41' 3-1/16"	45' 7-3/4"	51' 5-9/16"
Truck Centers	30' 4-13/16"	34' 9-1/2"	40' 7-5/16"
Height, Extreme	15' 5-1/2"	15' 5-1/2"	15' 5-1/2"
Width, Extreme	10' 7-7/16"	10' 7-7/16"	10' 7-7/16"

TANK

Class*	DOT 111A100W1	DOT 111A100W1	DOT 111A100W1
Inside Diameter	119 1/8"	119 1/8"	119 1/8"
Slope	1/4" per foot	1/4" per foot	1/4" per foot
Length Over Tank Heads	38' 4"	42' 8-13/16"	48' 6-1/2"
Plate Thickness	7/16"	7/16"	7/16"

TANK FITTINGS

Manway Cover	Cast Steel, Gr. B, 6-bolt	Cast Steel, Gr. B, 6-bolt	Cast Steel, Gr. B, 6-bolt
Manway Nozzle	20"	20"	20"
Siphon Pipe	N/A	N/A	N/A
Siphon Valve	N/A	N/A	N/A
Air Inlet	N/A	N/A	N/A
Safety Valve	75 psi	75 psi	75 psi
Vacuum Relief Valve	S.S.	S.S.	S.S.
Gauging Device	S.S. Visual Marker	S.S. Visual Marker	S.S. Visual Marker
Bottom Outlet Valve	4" Full Port 2040 Steam Jacketed Ball Valve	4" Full Port 2040 Steam Jacketed Ball Valve	4" Full Port 2040 Steam Jacketed Ball Valve
Sump	N/A	N/A	N/A

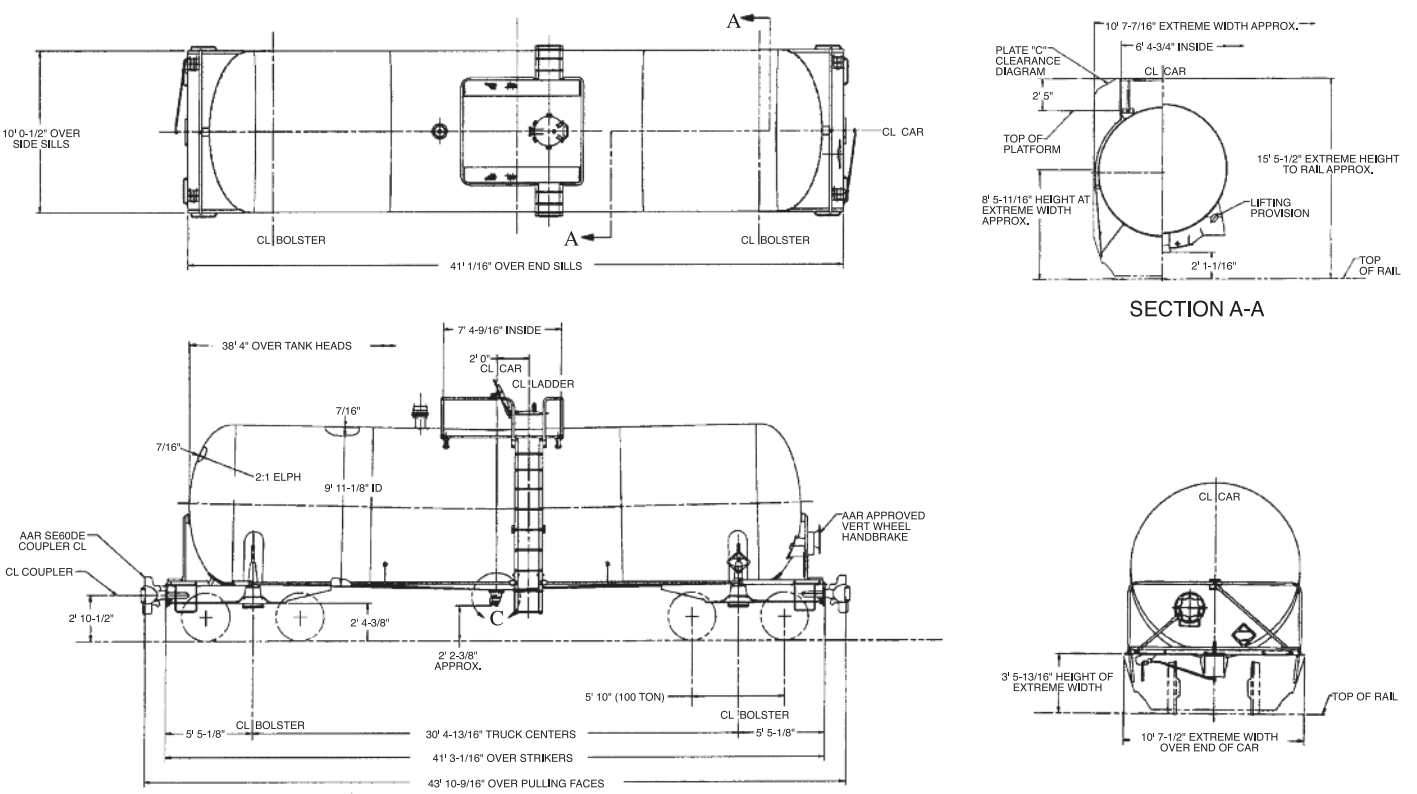
TRUCKS

Type	100 Ton Capacity	100 Ton Capacity	100 Ton Capacity
Wheels	Steel, 36" One-Wear	Steel, 36" One-Wear	Steel, 36" One-Wear

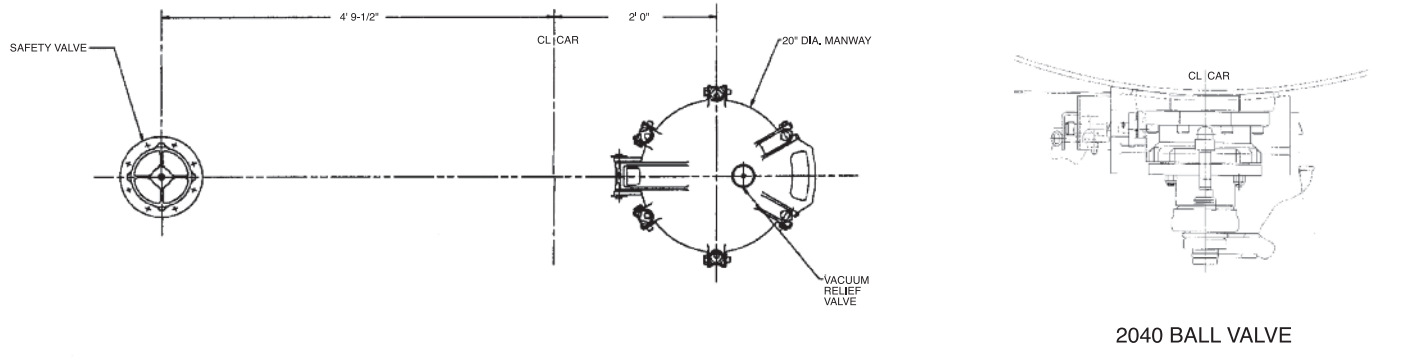
*Also available as Class AAR 211A100W1, 286,000 lbs. Gross Rail Load

21,000 Gallon Capacity
263,000 lbs. Gross Rail Load
DOT 111A100W1

GENERAL ARRANGEMENT

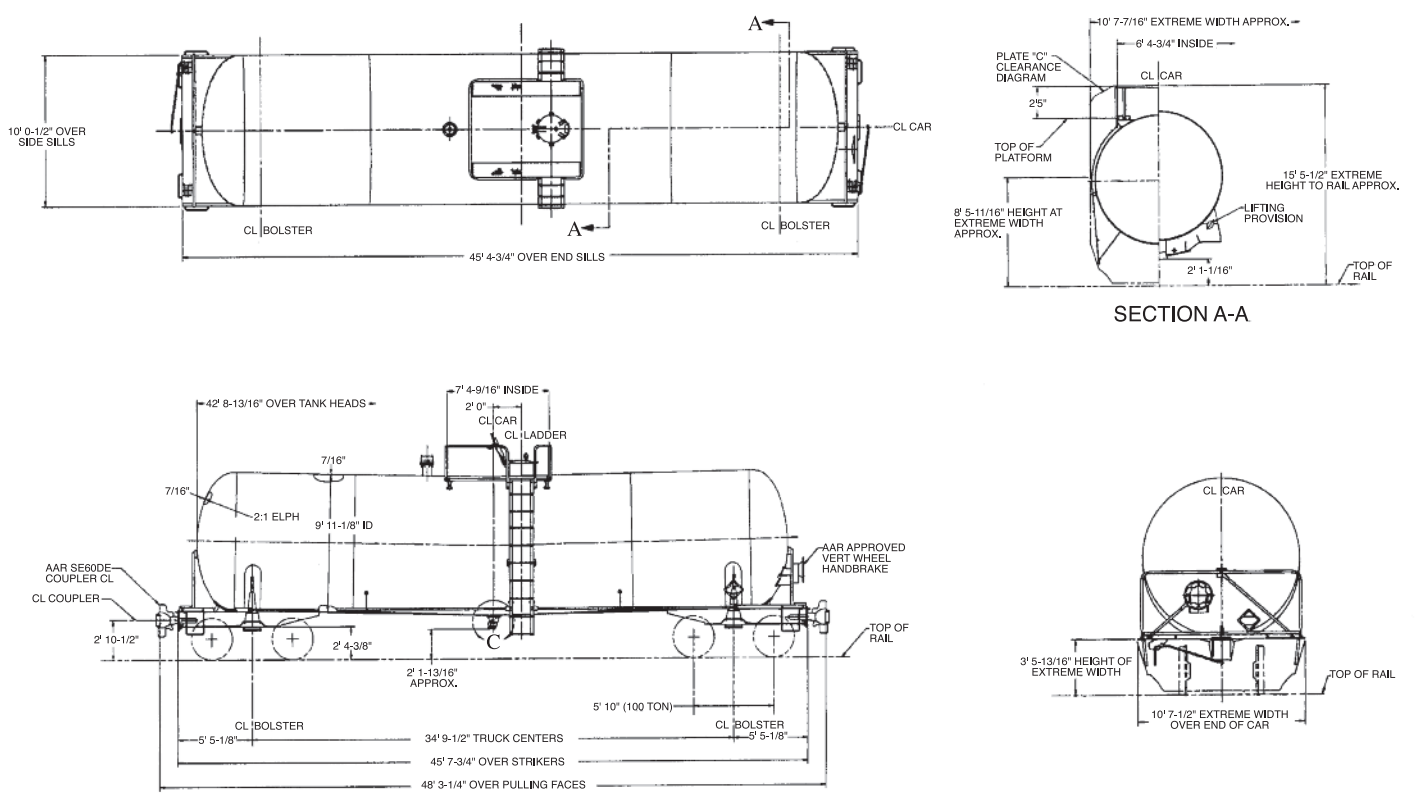


MANWAY & FITTINGS ARRANGEMENT



23,500 Gallon Capacity
263,000 lbs. Gross Rail Load
DOT 111A100W1

GENERAL ARRANGEMENT



MANWAY & FITTINGS ARRANGEMENT

