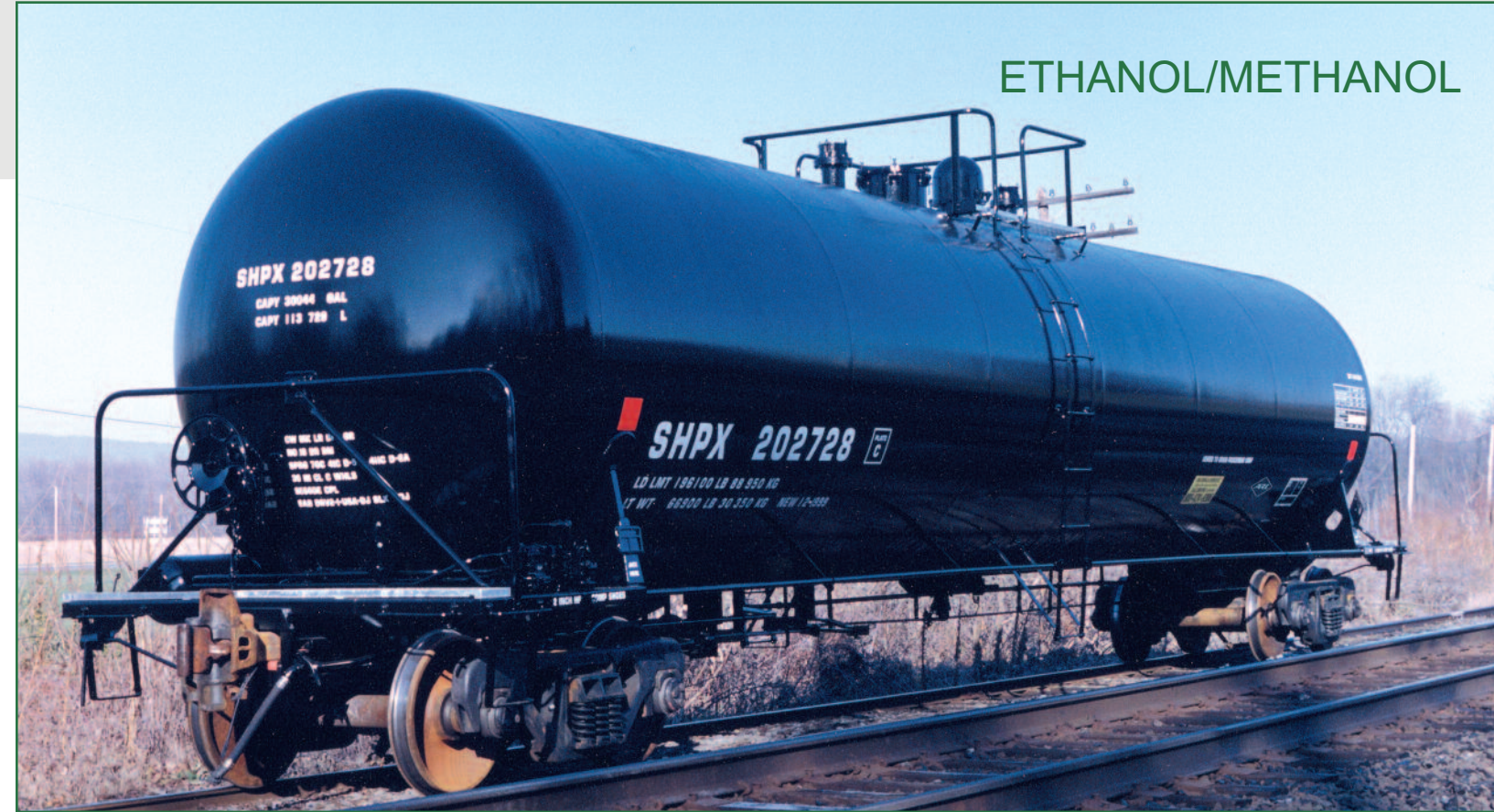


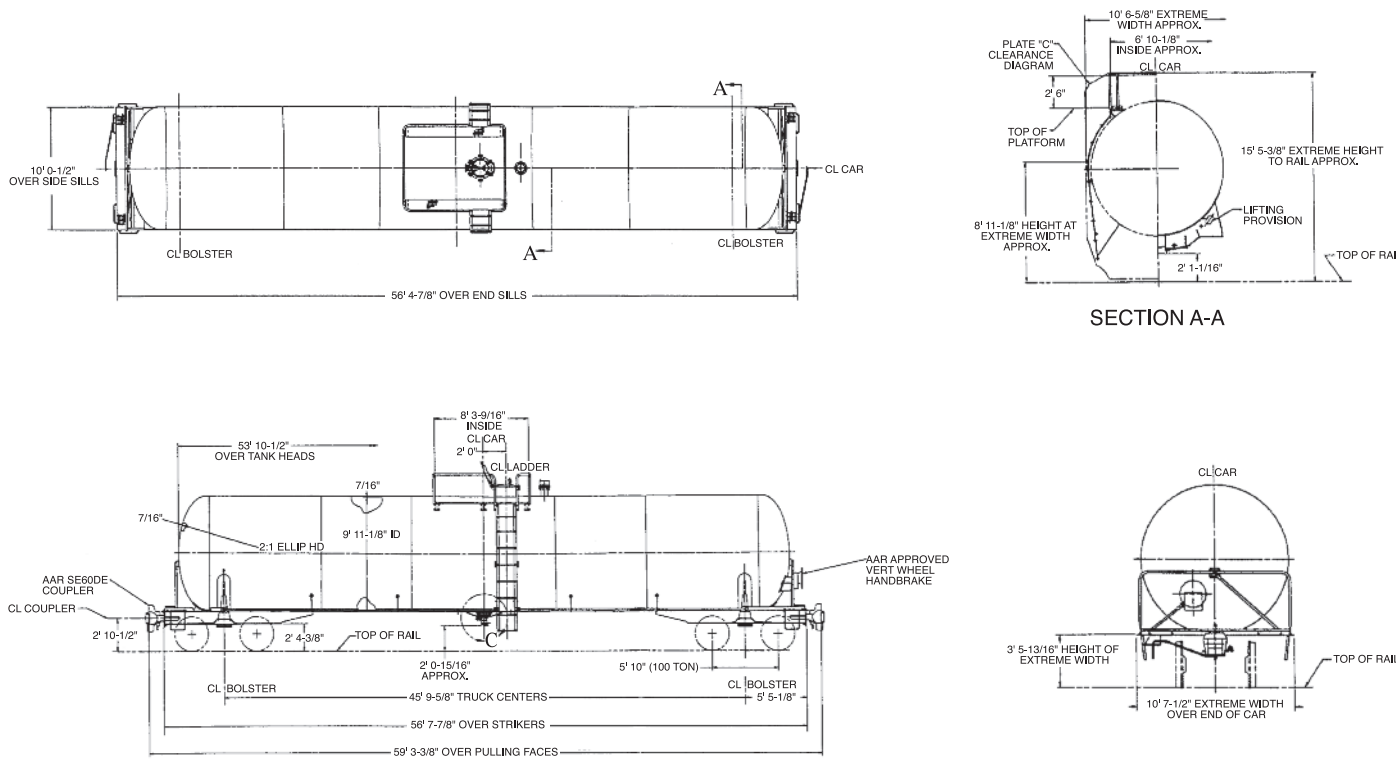


**30,000 Gallon Capacity
Slope Bottom
263,000 lbs. Gross Rail Load
DOT 111A100W1**

ETHANOL/METHANOL

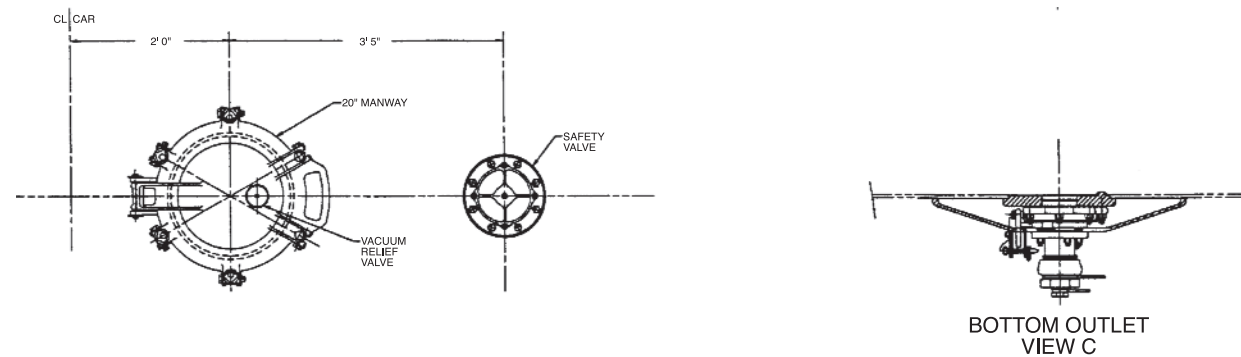


GENERAL ARRANGEMENT



Tank car specifically designed for the transportation of ethanol and methanol.

MANWAY & FITTINGS



SPECIFICATIONS

**30,000 Gallon Capacity
Straight Barrel
263,000 lbs. Gross Rail Load
DOT 111A100W1**

| GENERAL DATA | 30,000 Straight Barrel | 30,000 Slope Bottom |
|--------------|---------------------------|------------------------|
|--------------|---------------------------|------------------------|

| | | |
|--------------------------|----------------|----------------|
| Specification Stencilled | DOT 111A100W1 | DOT 111A100W1 |
| Shell Full Capacity | 30,000 Gallons | 30,000 Gallons |
| Gross Rail Load | 263,000 lbs. | 263,000 lbs. |
| Estimated Lightweight | 65,600 lbs. | 65,700 lbs. |
| Length Over Strikers | 56' 6-3/16" | 56' 7-7/8" |
| Truck Centers | 45' 7-15/16" | 45' 9-5/8" |
| Height, Extreme | 15' 5-1/2" | 15' 5-1/2" |
| Width, Extreme | 10' 6-15/16" | 10' 6-15/16" |

TANK

| | | |
|------------------------|---------------|------------------------------------|
| Class | DOT 111A100W1 | DOT 111A100W1 |
| Inside Diameter | 119 1/8" | 119 1/8" |
| Slope | N/A | 5/64" per foot (2" drop to center) |
| Length Over Tank Heads | 53' 9-5/8" | 53' 10-1/2" |
| Plate Thickness | 7/16" | 7/16" |

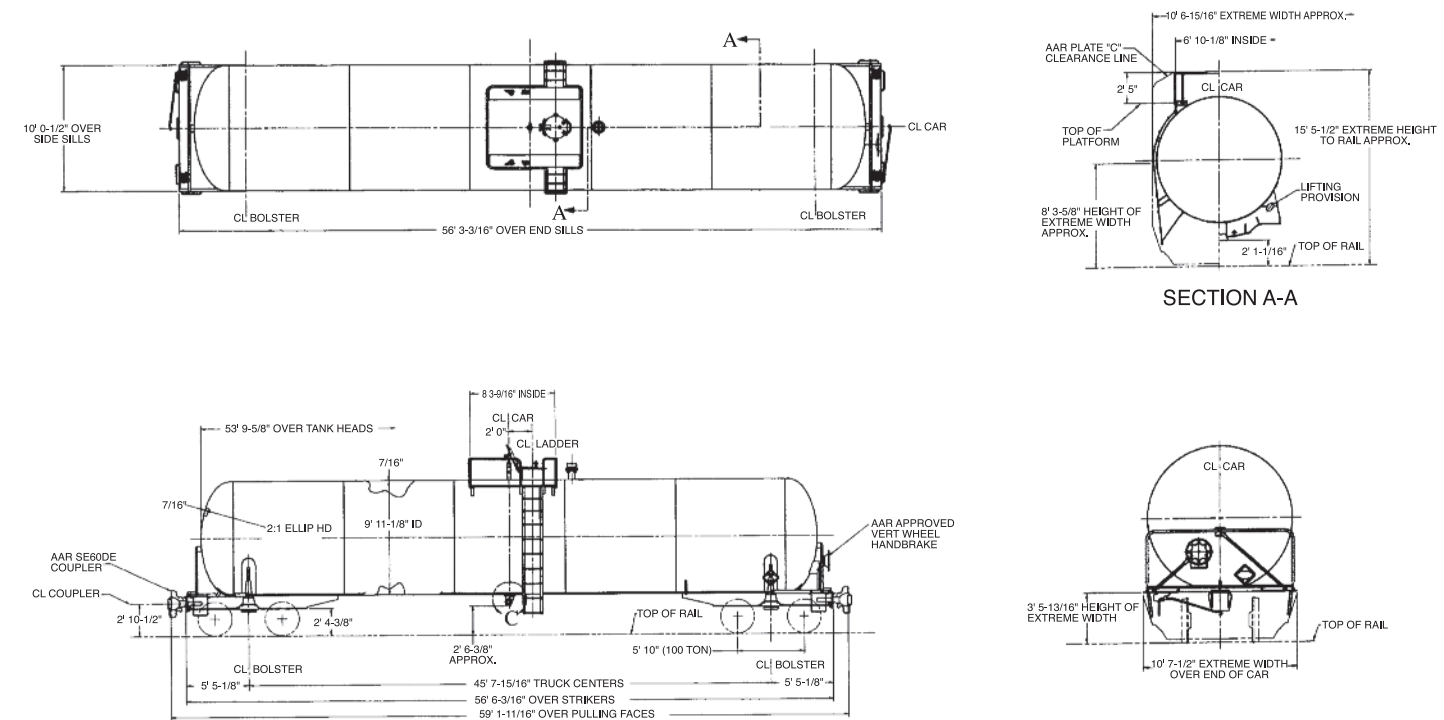
TANK FITTINGS

| | | |
|---------------------|----------------------------|----------------------------|
| Manway Cover | C.S., Gr. B | C.S., Gr. B |
| Manway Nozzle | 20" | 20" |
| Siphon Pipe | OPTIONAL | N/A |
| Siphon Valve | OPTIONAL | N/A |
| Air Inlet | OPTIONAL | N/A |
| Safety Valve | 75 psi | 75 psi |
| Vacuum Relief Valve | S.S. | S.S. |
| Gauging Device | S.S. Visual Marker | S.S. Visual Marker |
| Bottom Outlet Valve | Bottom Operated Ball Valve | Bottom Operated Ball Valve |
| Sump | N/A | N/A |

TRUCKS

| | | |
|--------|---------------------|---------------------|
| Type | 100 Ton Capacity | 100 Ton Capacity |
| Wheels | Steel, 36" One-Wear | Steel, 36" One-Wear |

GENERAL ARRANGEMENT



MANWAY & FITTINGS ARRANGEMENT

