

CORN SYRUP

19,500 Gallon Capacity
286,000 lbs. Gross Rail
Load
AAR 211A100W1

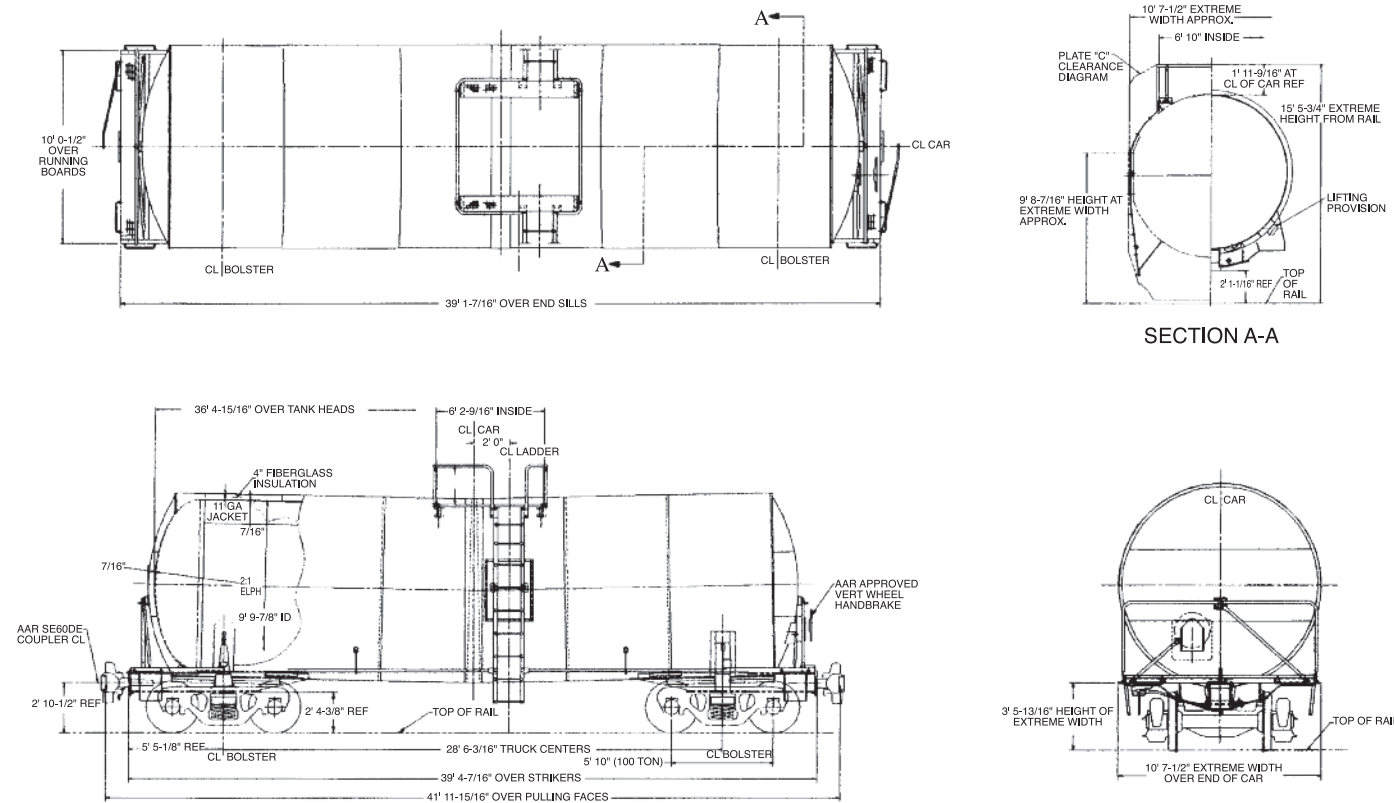


SMBC RAIL SERVICES

CORN SYRUP

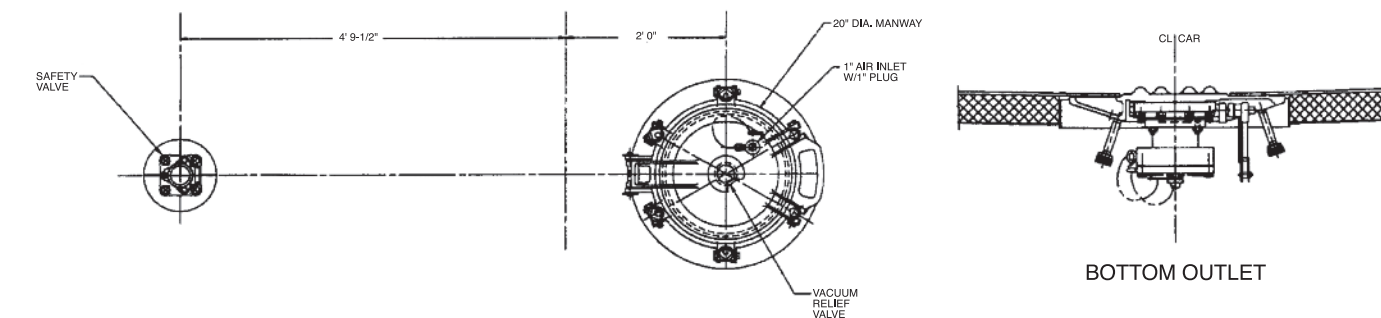


GENERAL ARRANGEMENT



Tank cars specifically designed for the transportation of corn syrup.

MANWAY & FITTINGS ARRANGEMENT



SPECIFICATIONS

17,625 Gallon Capacity
263,000 lbs. Gross Rail
Load
DOT 111A100W1

GENERAL DATA

17,625

19,500

Specification Stencilled	DOT 111A100W1	AAR 211A100W1
Shell Full Capacity	17,625 Gallons	19,500 Gallons
Gross Rail Load	263,000 lbs.	286,000 lbs.
Estimated Lightweight	63,500 lbs.	64,800 lbs.
Length Over Strikers	40' 9-7/8"	39' 4-7/16"
Truck Centers	29' 11-5/8"	28' 6-3/16"
Height, Extreme	15' 0-11/16"	15' 5-3/4"
Width, Extreme	10' 7-3/16"	10' 7-1/2"

TANK

Class	DOT 111A100W1	DOT 111A100W1
Inside Diameter	110 1/4"	117 7/8"
Slope	1/4" per foot	1/4" per foot
Length Over Tank Heads	37' 7-1/16"	36' 4-15/16"
Plate Thickness	7/16"	7/16"
Heater System	8 Lines 8" C.S. Exterior Half Oval Duplex System Manifold Inlets and Outlets with 4" Fiberglass Insulation	

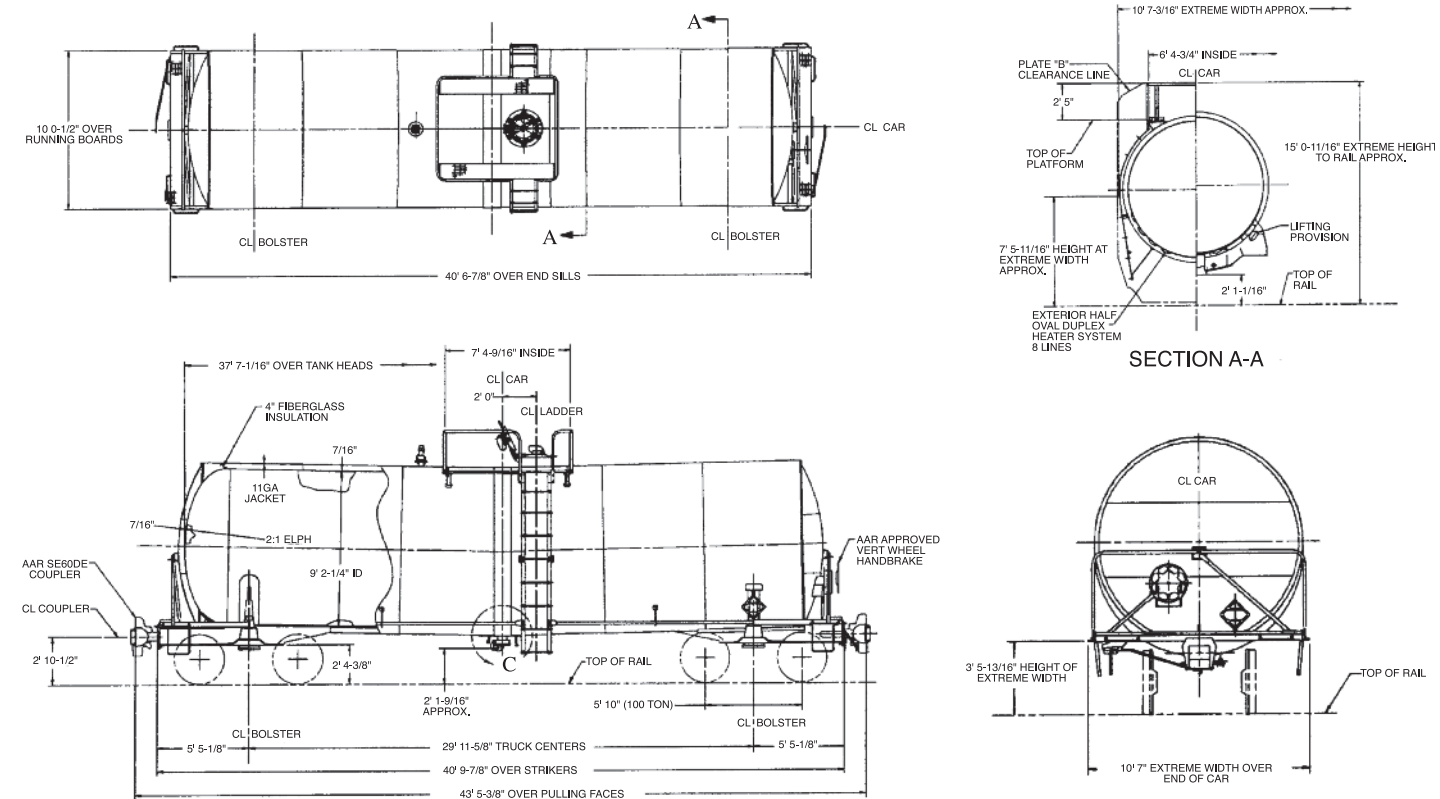
TANK FITTINGS

Manway Cover	Cast S.S. ASTM A-743	Cast S.S. ASTM A-743
Manway Nozzle	20" TY 304L S.S.	20" TY 304L S.S.
Siphon Pipe	N/A	N/A
Siphon Valve	N/A	N/A
Air Inlet	1" TY 316 S.S.	1" TY 316 S.S.
Safety Valve	75 psi S.S.	75 psi S.S.
Vacuum Relief Valve	S.S.	S.S.
Gauging Device	S.S. Visual Marker	S.S. Visual Marker
Bottom Outlet Valve	6" Wafer-Sphere	6" Wafer-Sphere
Sump	N/A	N/A

TRUCKS

Type	100 Ton Capacity	100 Ton Capacity
Wheels	Steel, 36" One-Wear	Steel, 36" One-Wear

GENERAL ARRANGEMENT



MANWAY & FITTINGS

