

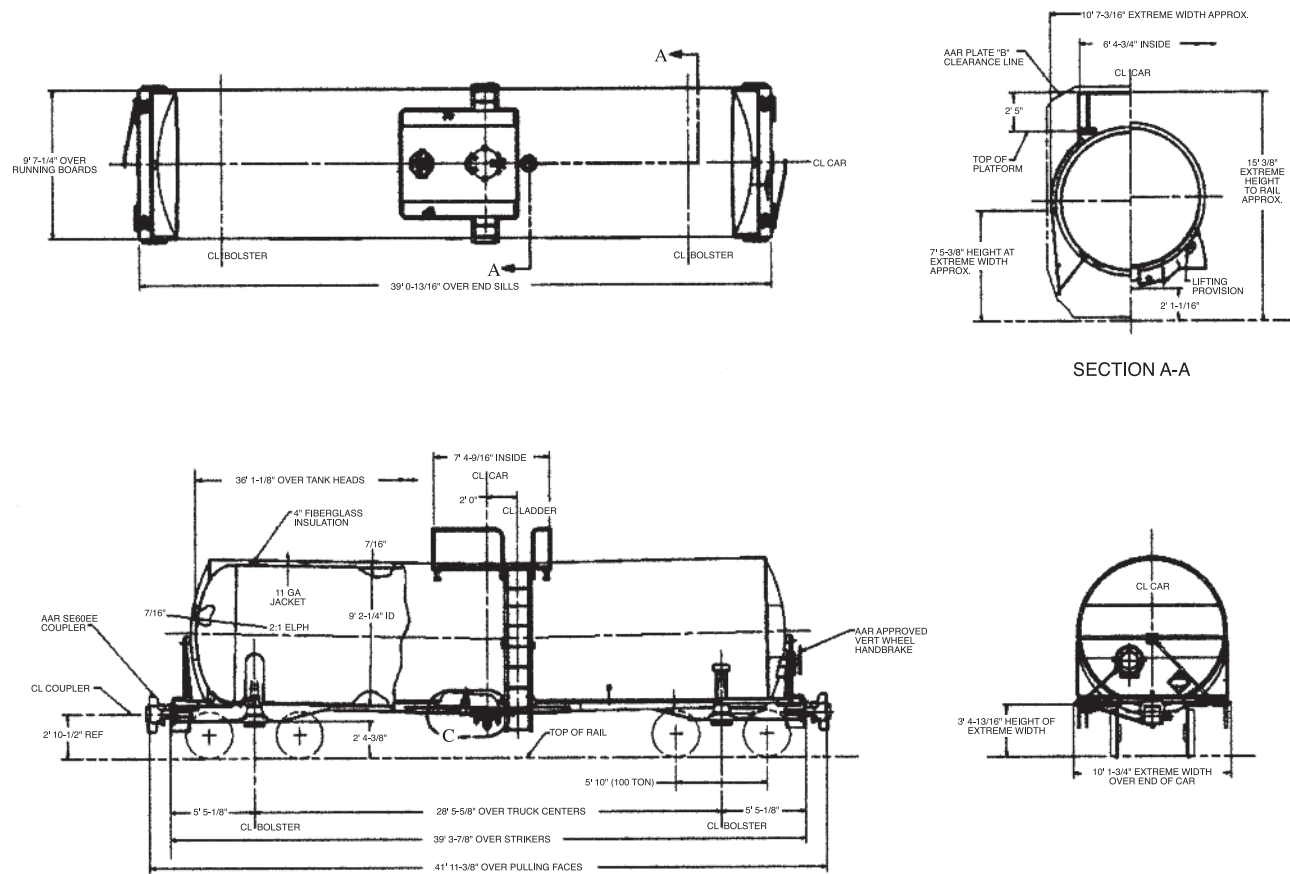
CAUSTIC SODA

16,890 Gallon Capacity
263,000 lbs. Gross Rail Load
DOT 111A100W1



SMBC RAIL SERVICES

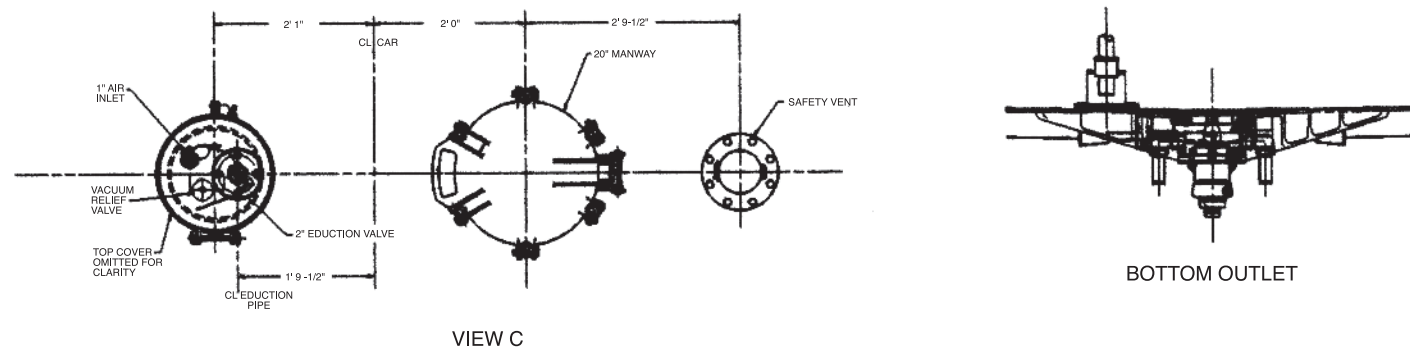
GENERAL ARRANGEMENT



CAUSTIC SODA

Tank car specifically designed for the transportation of caustic soda.

MANWAY & FITTINGS ARRANGEMENT



VIEW C

BOTTOM OUTLET

SPECIFICATIONS

16,300 Gallon Capacity
263,000 lbs. Gross Rail Load
DOT 111A100W1

GENERAL DATA

	16,300	16,890
Specification Stencilled	DOT 111A100W1	DOT 111A100W1
Shell Full Capacity	16,300 Gallons	16,890 Gallons
Gross Rail Load	263,000 lbs.	263,000 lbs.
Estimated Lightweight	61,400 lbs.	62,100 lbs.
Length Over Strikers	40' 10-5/16"	39' 3-7/8"
Truck Centers	30' 0-1/16"	28' 5-5/8"
Height, Extreme	14' 8-15/16"	14' 8-15/16"
Width, Extreme	10' 2-5/8"	10' 2-5/8"

TANK

Class	DOT 111A100W1	DOT 111A100W1
Inside Diameter	106"	110 1/4"
Slope	1/4" per foot	1/4" per foot
Length Over Tank Heads	37' 5-7/16"	37' 5-7/16"
Plate Thickness	7/16"	7/16"
Heater System	4 Lines 8" C.S. Exterior Half Oval Simplex with 4" Fiberglass Insulation	

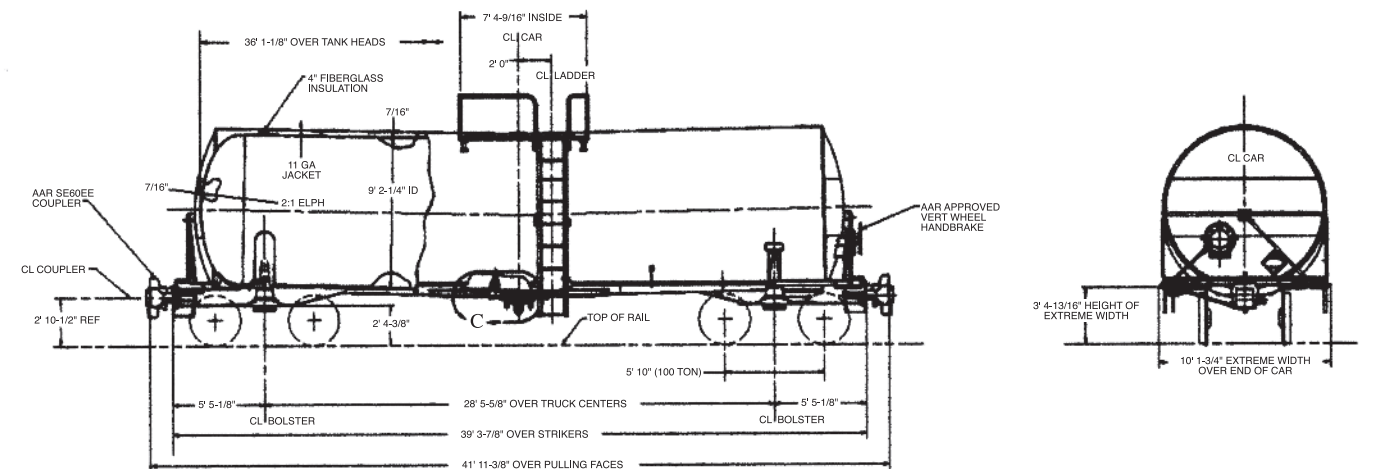
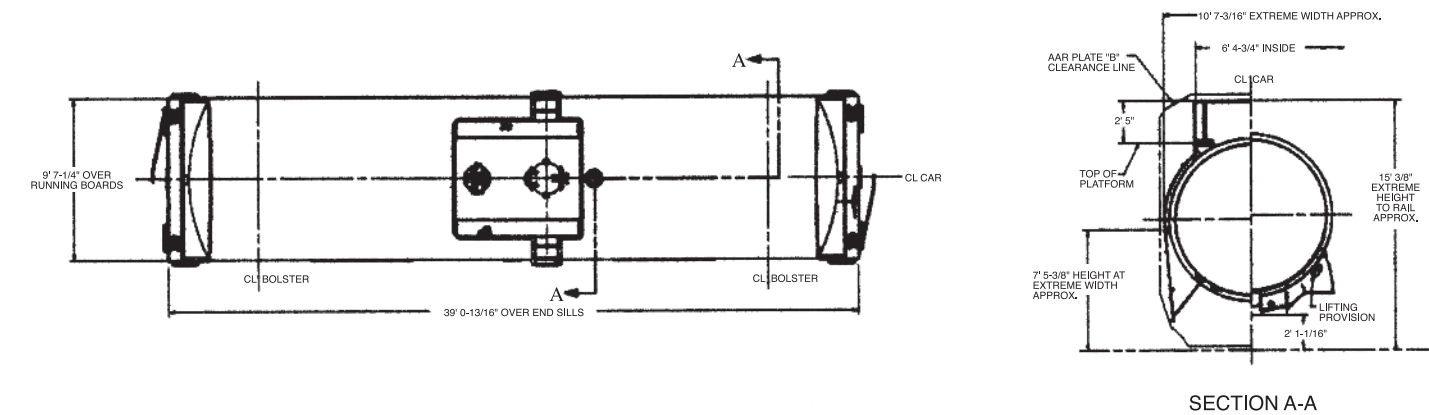
TANK FITTINGS

Manway Cover	Cast Steel, Gr. B, 6-Bolt	Cast Steel, Gr. B, 6-Bolt
Manway Nozzle	20"	20"
Siphon Pipe	2" SCH. 80 TY. 316 S.S.	2" SCH. 80 TY. 316 S.S.
Siphon Valve	2" S.S. Ball Valve	2" S.S. Ball Valve
Air Inlet	1" S.S. Ball Valve	1" S.S. Ball Valve
Safety Valve	Safety Vent with 100# Rupture Disk	Safety Vent with 100# Rupture Disk
Vacuum Relief Valve	S.S.	S.S.
Gauging Device	S.S. Visual Marker	S.S. Visual Marker
Bottom Outlet Valve	Top Operated 6" Positive Clapper	Top Operated 6" Positive Clapper
Sump	N/A	N/A

TRUCKS

Type	100 Ton Capacity	100 Ton Capacity
Wheels	Steel, 36" One-Wear	Steel, 36" One-Wear

GENERAL ARRANGEMENT



MANWAY & FITTINGS

